

# KOMATSU®

## OPERATING WEIGHT

PC18MR-3	1,780 kg	3,920 lb
PC27MR-3	2,890 kg	6,370 lb
PC30MR-3	3,140 kg	6,920 lb
PC35MR-3	3,575 kg	7,880 lb
PC45MR-3	4,755 kg	10,480 lb
PC55MR-3	5,160 kg	11,380 lb

**PC18MR-3**   **PC27MR-3**  
**PC30MR-3**   **PC35MR-3**  
**PC45MR-3**   **PC55MR-3**

COMPACT  
HYDRAULIC EXCAVATOR



# WALK-AROUND

OPERATING WEIGHT		
PC18MR-3	1,780 kg	3,920 lb
PC27MR-3	2,890 kg	6,370 lb
PC30MR-3	3,140 kg	6,920 lb
PC35MR-3	3,575 kg	7,880 lb
PC45MR-3	4,755 kg	10,480 lb
PC55MR-3	5,160 kg	11,380 lb



Photo may include optional equipment



Photo may include optional equipment

### Performance and Versatility

- Komatsu HydrauMind hydraulic system
- Automatic load sensing two-speed travel
- Standard auxiliary hydraulics
- Integrated counterweight and tight tail swing

### Operator Comfort

- Large operator platform
- Fully adjustable suspension seat
- Pilot proportional joystick controls
- Large monitor panel
- Easy entry and egress
- Low noise

### Service and Maintenance

- Wide opening engine hood and side covers
- Side-by-side radiator and oil cooler are easy to inspect and clean
- Extended lubrication and engine oil replacement intervals reduce maintenance and down time
- Tilt-forward operator's station provides full access to engine

### Value, Durability, and Strength

- High strength X-track frame
- Castings are used for boom foot, tip, and swing yoke
- Single large diameter swing pin
- Three track options: rubber, steel, and Roadliner
- O-ring face seal hydraulic fittings
- Moisture/dust resistant electrical connectors

### General Features

- Two-post ROPS canopy or ROPS cab
- Neutral engine start system
- Excellent visibility enhances job site awareness
- Low emission Komatsu engine with dual element air cleaner
- One key operates the ignition and all machine locks

# PRODUCTIVITY FEATURES

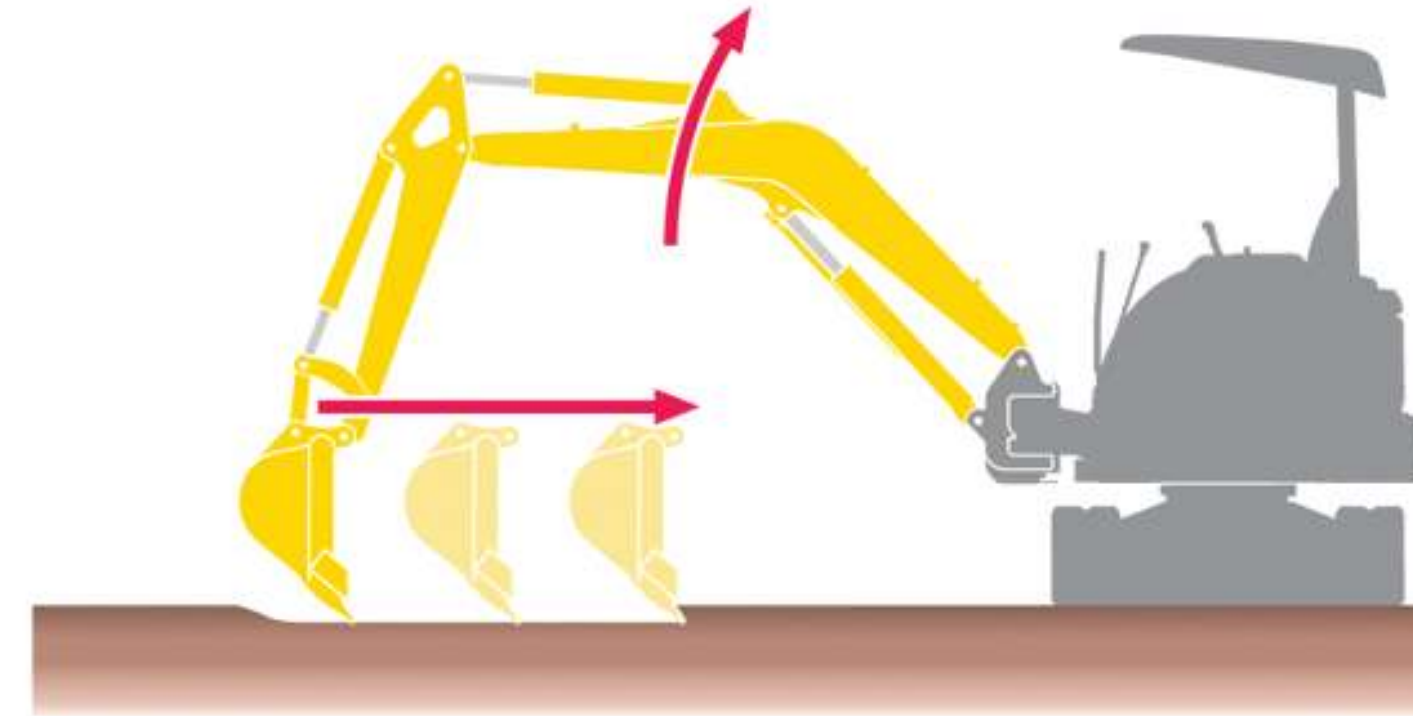
## Tight Tail Swing

Operator is able to focus on the work in front of them and worry less about a rear swing impact, even in confined areas with only an **80mm 3"** projection over the tracks.



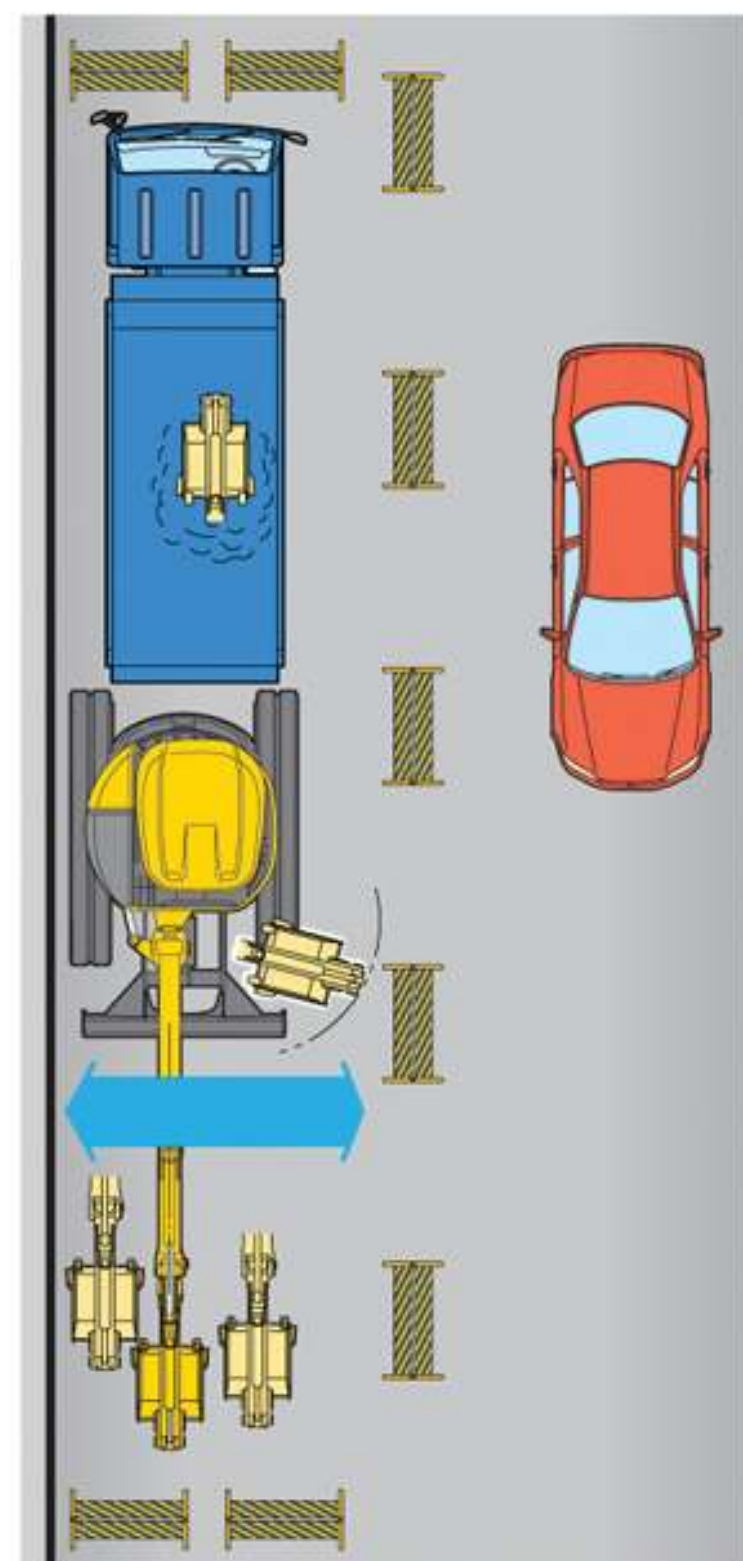
## CLSS HydraMind Hydraulic System

When two or more actuators are operated simultaneously, the pressure-compensated CLSS system ensures each actuator works according to its control input, regardless of the size of the load. This gives the operator precise control at all times.



## Confined Job Site Advantage

Operator can focus on digging and improve productivity, because they can worry less about obstacles to the rear of the machine, such as parked cars, walls and trees.



PC18MR-3	2,070mm	6'9"
PC27MR-3	2,515mm	8'3"
PC30MR-3	2,415mm	7'11"
PC35MR-3	2,550mm	8'4"
PC45MR-3	2,830mm	9'3"
PC55MR-3	2,800mm	9'2"

\* : When boom swing

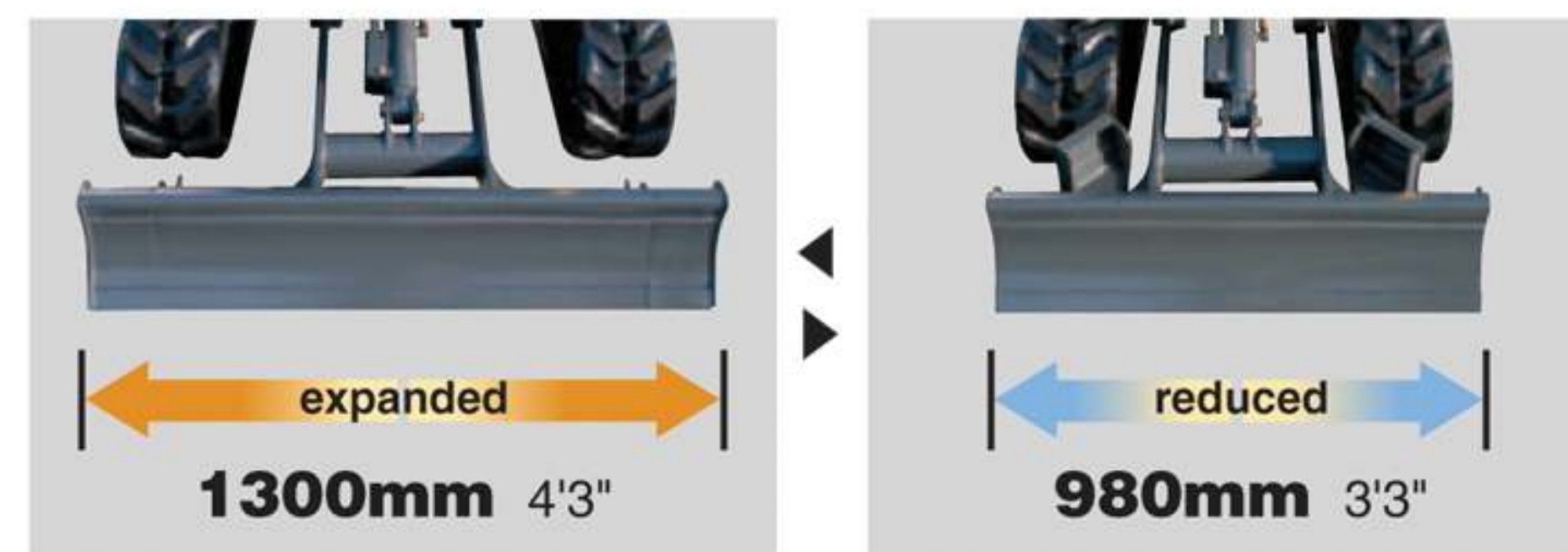
## Automatic Two-speed Travel

The travel speed selector switch installed on the blade control allows the operator to engage high speed travel. Once engaged the system automatically senses the travel load and shifts between high speed and low speed travel.



## Expandable undercarriage (PC18MR-3)

The PC18MR-3 can pass through narrow space due to narrow width and undercarriage can be expanded for good stability during excavation.



## Working Ranges

	mm ft.in.		
	<b>PC18MR-3</b>	<b>PC27MR-3</b>	<b>PC30MR-3</b>
Max. digging height	3615 11'10"	4480 14'8"	4840 15'11"
Max. digging depth	2160 7'1"	2550 8'4"	2760 9'1"
Max. digging reach at ground level	3935 12'11"	4550 14'11"	4910 16'1"
Loading height	1220 4'0"	1650 5'5"	1700 5'7"
	<b>PC35MR-3</b>	<b>PC45MR-3</b>	<b>PC55MR-3</b>
Max. digging height	5000 16'5"	5515 18'1"	5945 19'6"
Max. digging depth	3110 10'2"	3350 12'0"	3800 12'6"
Max. digging reach at ground level	5170 17'0"	5575 18'3"	6070 19'11"
Loading height	1805 5'11"	1945 6'5"	1930 6'4"

## Digging Force

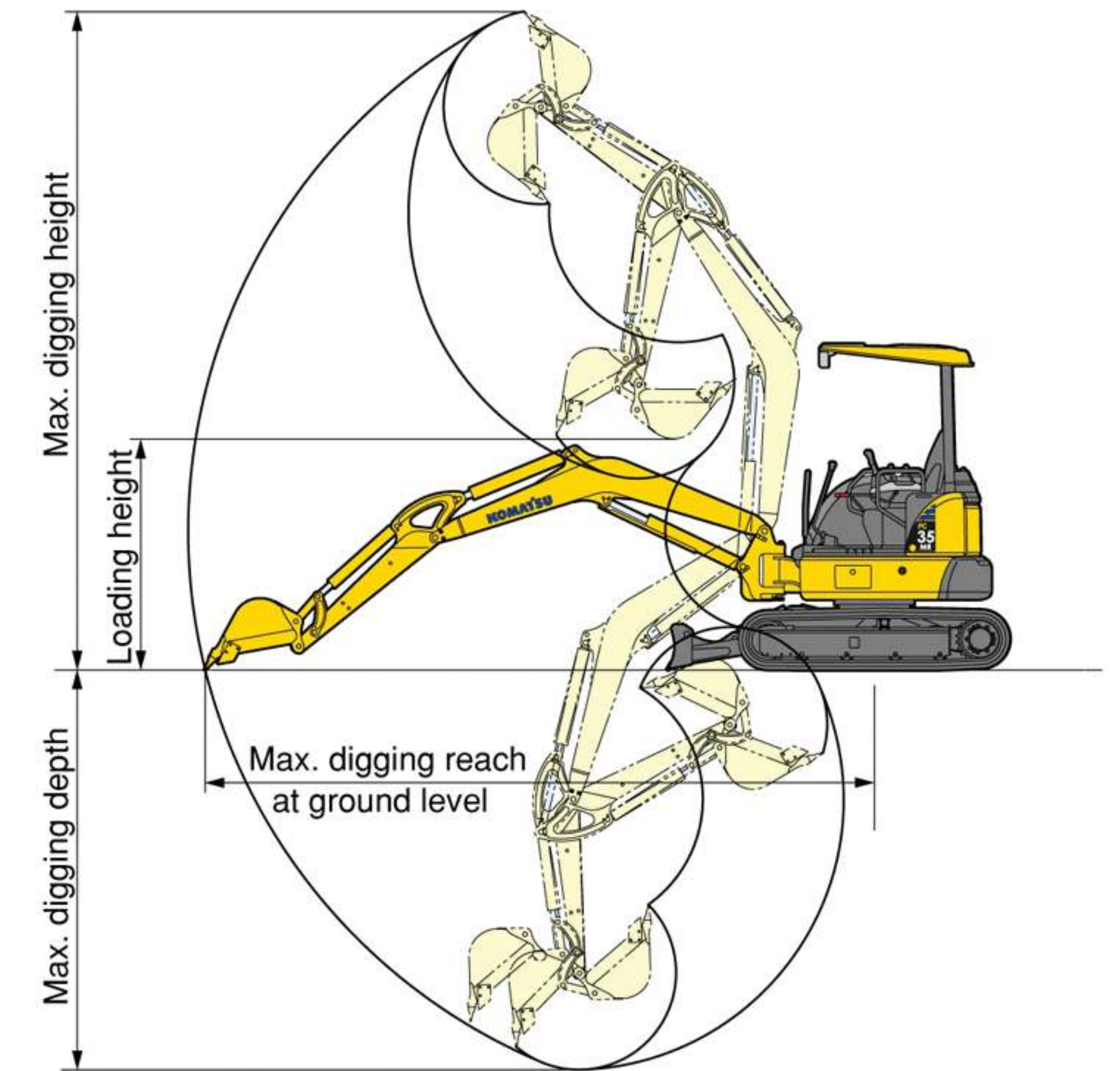
	kg lb		
	<b>PC18MR-3</b>	<b>PC27MR-3</b>	<b>PC30MR-3</b>
Max. crowd force: Arm	1010 2230	1500 3310	1800 3970
Max. digging force: Bucket	1620 3570	2230 4920	3000 6610
	<b>PC35MR-3</b>	<b>PC45MR-3</b>	<b>PC55MR-3</b>
Max. crowd force: Arm	2100 4630	2200 4850	2440 5380
Max. digging force: Bucket	3050 6720	3460 7630	3980 8770

## Auxiliary Flow

	ltr/min USgal/min		
	<b>PC18MR-3</b>	<b>PC27MR-3</b>	<b>PC30MR-3</b>
Auxiliary flow	35 9.2	50 13.2	70 18.5
	<b>PC35MR-3</b>	<b>PC45MR-3</b>	<b>PC55MR-3</b>
Auxiliary flow	70 18.5	70 18.5	70 18.5

## Drawbar Pull

	kg lb		
	<b>PC18MR-3</b>	<b>PC27MR-3</b>	<b>PC30MR-3</b>
Max. drawbar pull	1700 3750	3200 7050	3400 7500
	<b>PC35MR-3</b>	<b>PC45MR-3</b>	<b>PC55MR-3</b>
Max. drawbar pull	3400 7500	4280 9440	4280 9440



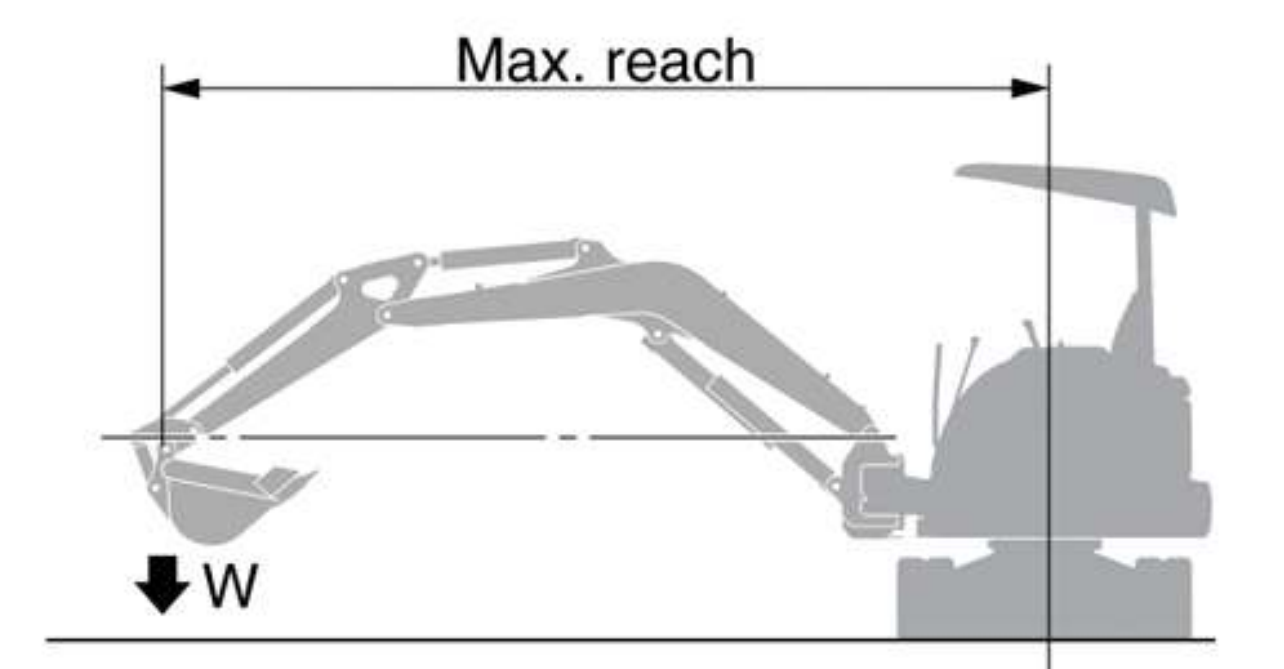
## Stability

The MR-3 series offers exceptional lifting capacity and stability in a tight tail machine.

## Lifting capacity comparison

	kg lb		
	<b>PC18MR-3</b>	<b>PC27MR-3</b>	<b>PC30MR-3</b>
3m 10'	220 480	370 820	365 800
Rating at max. reach	185 410	245 540	220 480
	<b>PC35MR-3</b>	<b>PC45MR-3</b>	<b>PC55MR-3</b>
3m 10'	580 1280	995 2190	1005 2220
Rating at max. reach	345 760	505 1110	435 960

The conditions of this comparison are a standard arm, sideways, blade on ground, and at a height of 0m (ground level).



# OPERATOR ENVIRONMENT

### Large Entrance and Foot Space

The two-post canopy design allows the MR-3 series to have larger entrance for entry and egress.



### Fully Adjustable Suspension Seat

The spacious operator's compartment provides outstanding ride quality. The large suspension seat enhances operator comfort.

### Joystick Controls

PPC joystick controls are low effort and provide fine control.



PC18MR-3

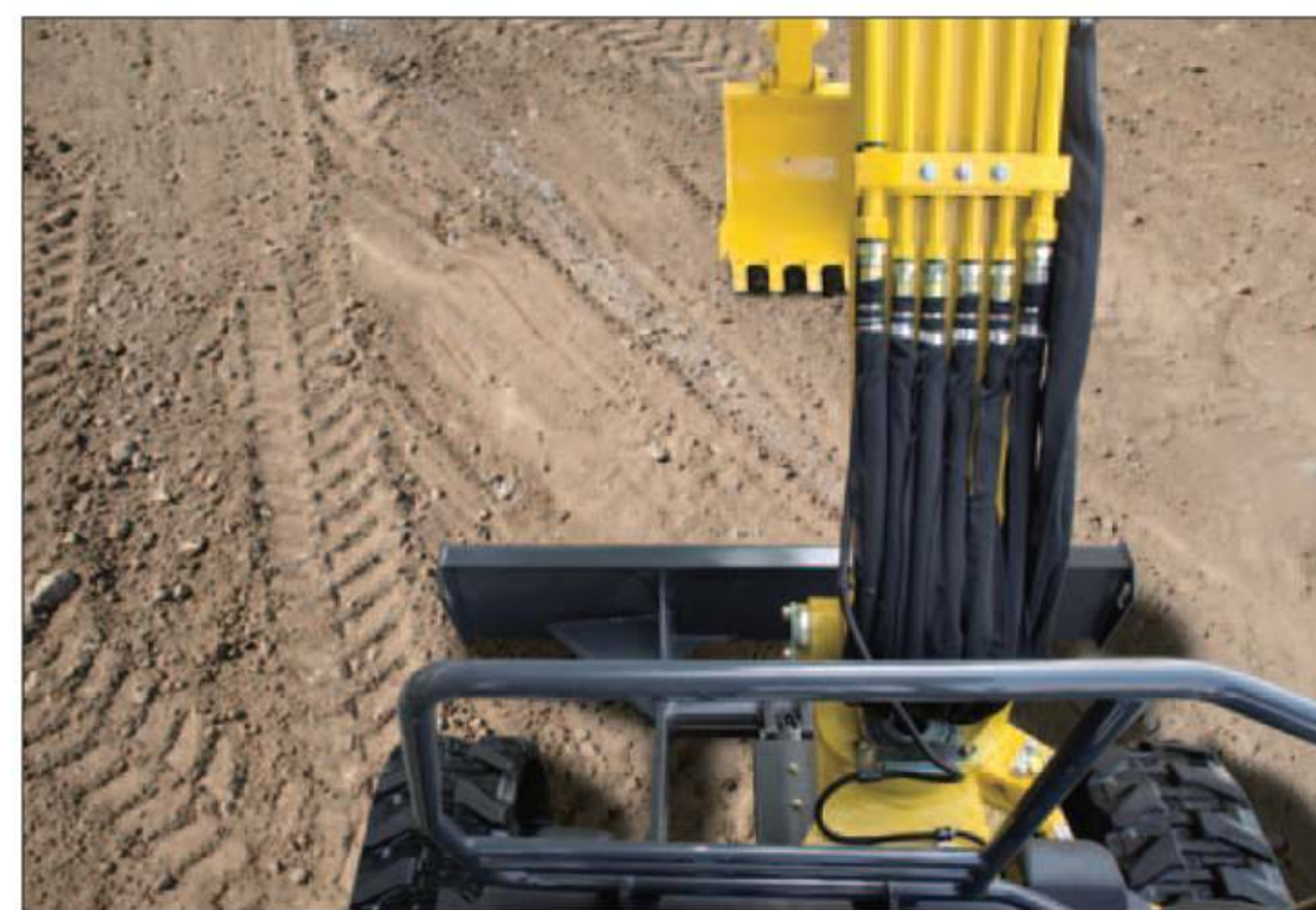
### Pattern Change Valve (optional equipment)

Pattern change valve allows the operator to change easily between ISO or SAE control patterns.



### Excellent Visibility

The operator's station design allows the operator to maintain 360° field view.



### Large Operator's Cab (optional equipment)

The cab provides outstanding foot space. Ergonomic design helps reduce fatigue. The large rear glass provides the operator excellent rear visibility.



Photo may include optional equipment



Photo may include optional equipment

### Upper-rail Type Sliding Door



### Large Rear Glass



### Large-capacity Air Conditioner (optional equipment)

Provides comfortable operator environment throughout the year.



### Cup Holder

Large cup holder is standard equipment.



Canopy

Cab

# EASY MAINTENANCE

### Tilt-up Operator Compartment

Operator's compartment floor tilts forward providing easy access to hydraulic compartments.

### Fully Opening Engine Door and Side Cover

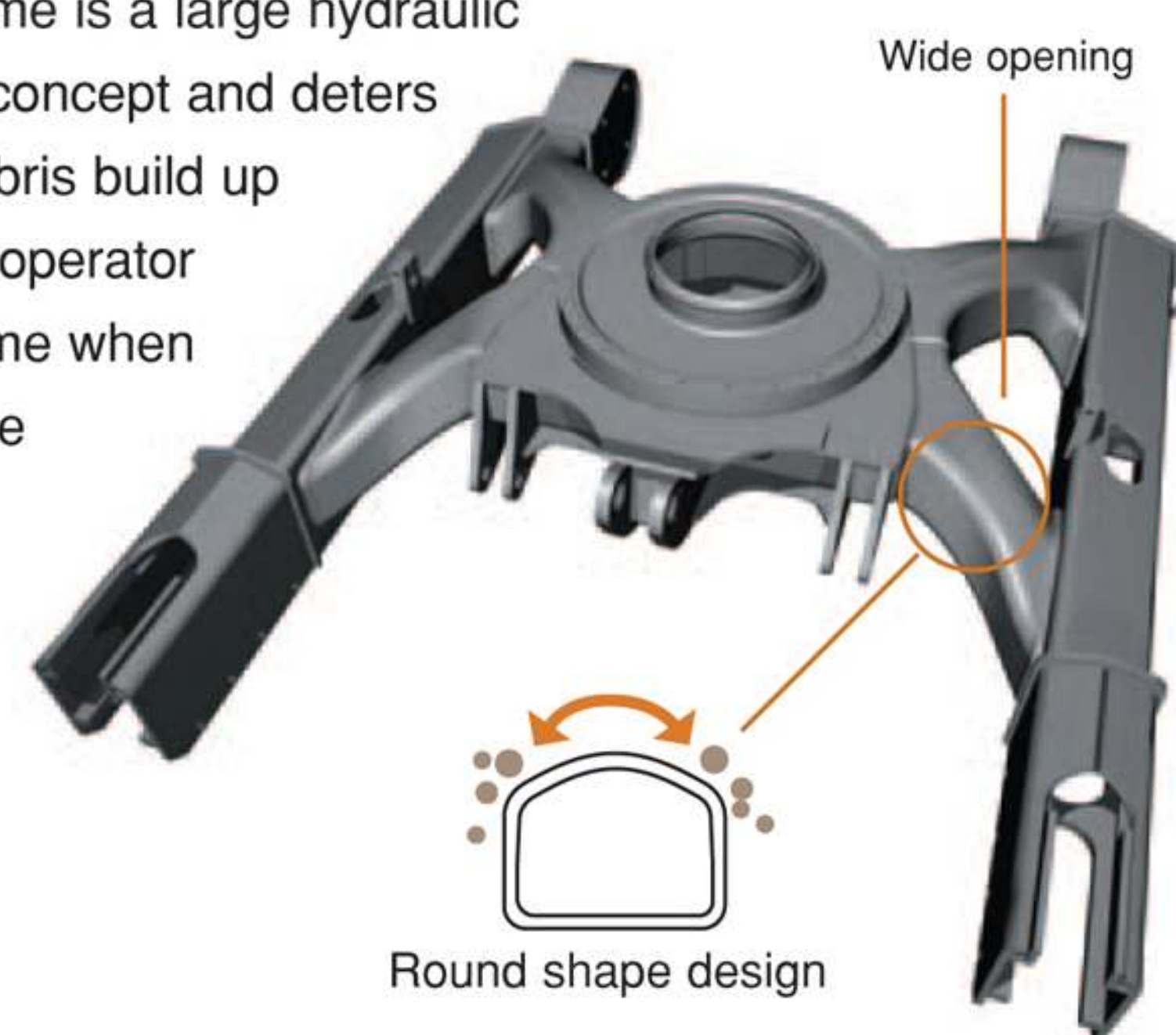
Allow easy access for daily checks and regular maintenance.



Photo may include optional equipment

### High Strength X-track Frame

X-track frame is a large hydraulic excavator concept and deters dirt and debris build up saving the operator valuable time when cleaning the machine.



### 500 Hour Maintenance Intervals

Extended lubrication, engine oil and filter replacement intervals reduce maintenance costs.

Comparison of periodic service intervals		hours
		MR-3 SERIES
Lubricating to swing circle		500
Lubricating to bushing of work equipment		500
Replacement of engine oil / filter		500

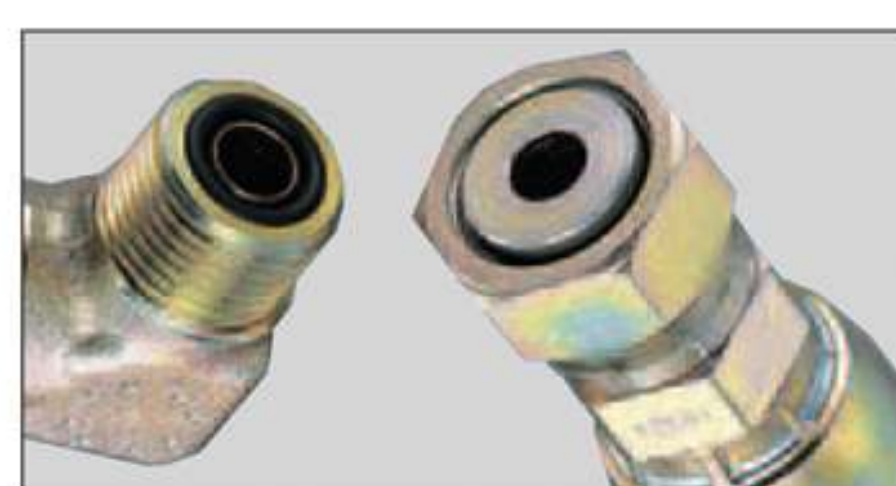
### Larger Diameter Swing Pin

Has high durability and maintains suitable clearances between pin and bushing after long-term operation.



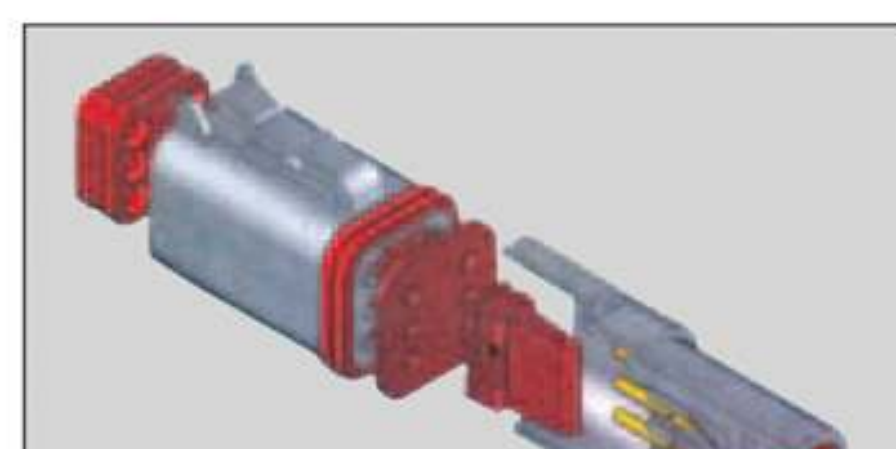
### O-ring Face Seal

O-ring face seals are highly reliable.



### DT Connector

DT connectors are moisture and dust resistant.



# FEATURES

### Two-post ROPS & OPG Canopy

#### ROPS [Roll-Over Protective Structures]

This canopy meets the requirements of ROPS, with the advantage of a two-post design.



### Neutral Engine Start System

Locks out drives and hydraulics during machine start up.



### Tie-Downs or Anchor Points

Large tie-downs or anchor points in the track frame and blade allow the machine to be secured quickly for transport.



## OPTIONAL EQUIPMENT

### Roadliner (not available for PC18MR-3)

Replacement is fast, easy and cost efficient as individual shoes are replaced when damaged or worn instead of replacing the entire track.



### Steel Shoes with Rubber Pad

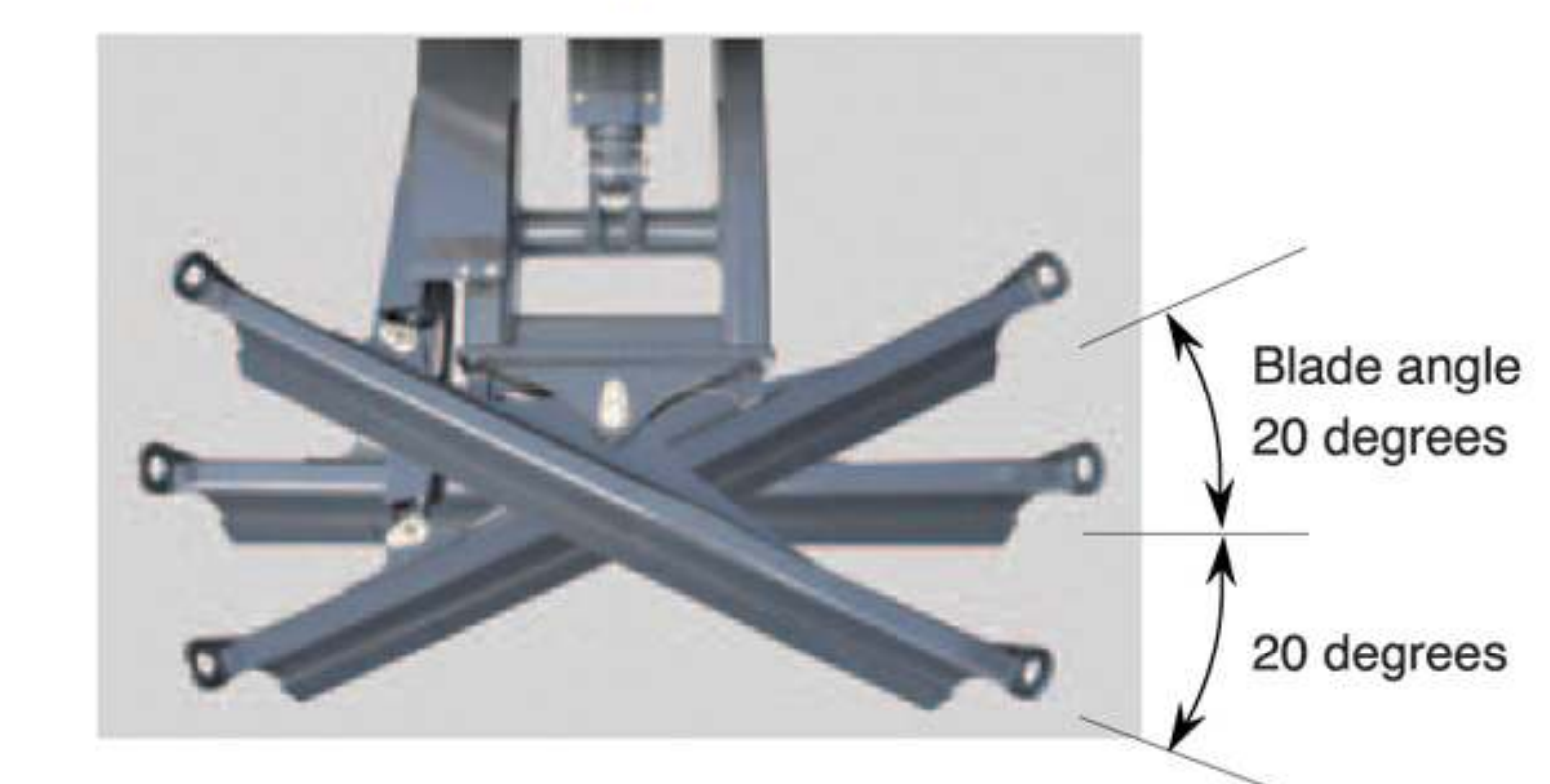


### Optional Blade

(Bolt-on cutting edge type)



### PA Blade (not available for PC18MR-3 and PC27MR-3)





**STANDARD/OPTIONAL EQUIPMENT**

●: Standard equipment ○: Optional equipment

	PC18MR-3	PC27MR-3	PC30MR-3	PC35MR-3	PC45MR-3	PC55MR-3
<b>Arm</b>						
STD arm with aux. piping PC18MR: <b>965mm 3'2"</b> PC27MR: <b>1100mm 3'7"</b> PC30MR: <b>1240mm 4'1"</b> PC35MR: <b>1370mm 4'6"</b> PC45MR: <b>1375mm 4'6"</b> PC50MR: <b>1640mm 5'5"</b>	●	●	●	●	●	●
Long arm with aux. piping PC18MR: <b>1215mm 4'0"</b> PC27MR: <b>1370mm 4'6"</b> PC30MR: <b>1610mm 5'3"</b> PC35MR: <b>1720mm 5'8"</b> PC45MR: <b>1770mm 5'10"</b> PC50MR: <b>2000mm 6'7"</b>	○	○	○	○	○	○
STD arm without aux. piping	○	○	○	○	○	○
Long arm without aux. piping	○	○	○	○	○	○
<b>Bucket Capacity Bucket width (incl. side cutters)</b>						
<b>0.022m<sup>3</sup></b> 0.029yd <sup>3</sup> <b>250mm</b> 10" ( <b>300mm</b> 12")	○					
<b>0.035m<sup>3</sup></b> 0.046yd <sup>3</sup> <b>250mm</b> 10" ( <b>320mm</b> 13")		○	○			
<b>0.04m<sup>3</sup></b> 0.052yd <sup>3</sup> <b>350mm</b> 14" ( <b>400mm</b> 16")	○					
<b>0.044m<sup>3</sup></b> 0.058yd <sup>3</sup> <b>280mm</b> 11" ( <b>350mm</b> 14")		○	○			
<b>0.044m<sup>3</sup></b> 0.058yd <sup>3</sup> <b>400mm</b> 16" ( <b>450mm</b> 18")	●					
<b>0.055m<sup>3</sup></b> 0.072yd <sup>3</sup> <b>350mm</b> 14" ( <b>420mm</b> 17")				○		
<b>0.055m<sup>3</sup></b> 0.072yd <sup>3</sup> <b>300mm</b> 12" ( <b>370mm</b> 14")					○	○
<b>0.08m<sup>3</sup></b> 0.10yd <sup>3</sup> <b>430mm</b> 17" ( <b>500mm</b> 20")		●				
<b>0.09m<sup>3</sup></b> 0.12yd <sup>3</sup> <b>430mm</b> 17" ( <b>500mm</b> 20")		○	●	○		
<b>0.11m<sup>3</sup></b> 0.14yd <sup>3</sup> <b>530mm</b> 21" ( <b>600mm</b> 24")			○	●		
<b>0.11m<sup>3</sup></b> 0.14yd <sup>3</sup> <b>430mm</b> 17" ( <b>500mm</b> 20")					○	○
<b>0.13m<sup>3</sup></b> 0.17yd <sup>3</sup> <b>630mm</b> 25" ( <b>700mm</b> 28")				○		
<b>0.14m<sup>3</sup></b> 0.18yd <sup>3</sup> <b>530mm</b> 21" ( <b>600mm</b> 24")					●	
<b>0.16m<sup>3</sup></b> 0.21yd <sup>3</sup> <b>580mm</b> 23" ( <b>650mm</b> 26")					○	●
<b>Track shoes</b>						
<b>230mm 9"</b> rubber shoes	●					
<b>300mm 12"</b> rubber shoes		●	●	●		
<b>400mm 16"</b> rubber shoes					●	●
<b>230mm 9"</b> steel shoes	○					
<b>300mm 12"</b> steel shoes		○	○	○		
<b>400mm 16"</b> steel shoes					○	○
<b>230mm 9"</b> steel shoes with rubber pad	○					
<b>300mm 12"</b> steel shoes with rubber pad		○	○	○		
<b>400mm 16"</b> steel shoes with rubber pad					○	○
<b>300mm 12"</b> road liner		○	○	○		
<b>400mm 16"</b> road liner					○	○
<b>Blade</b>						
Expandable blade assembly	●					
Blade assembly		●	●	●	●	●
Blade assembly with BOC		○	○	○	○	○
PA blade			○	○	○	○
<b>Others</b>						
<b>Standard equipment</b>			<b>Optional equipment</b>			
<ul style="list-style-type: none"> <li>• Additional counterweight</li> <li>• Air cleaner, single element</li> <li>• Automatic two-speed travel</li> <li>• Rear view mirrors, RH and LH</li> <li>• Seat belt, <b>78mm 3"</b> width</li> <li>• Steering pedals</li> </ul>		<ul style="list-style-type: none"> <li>• Suspension seat, reclining with arm rests</li> <li>• Travel alarm</li> <li>• Two-post ROPS &amp; Top guard canopy</li> </ul>		<ul style="list-style-type: none"> <li>• Additional working light</li> <li>• Air conditioner (for cab) (not available for PC18MR-3)</li> <li>• Cigarette lighter (for cab)</li> <li>• Pattern change valve (ISO - Backhoe)</li> <li>• Radiator net</li> <li>• Radio (for cab)</li> </ul>		<ul style="list-style-type: none"> <li>• Rigid seat, reclining</li> <li>• ROPS &amp; Top guard cab with heater, front window washer/wiper, cup holder and ashtray (not available for PC18MR-3)</li> <li>• Seat belt, <b>50mm 2"</b> width</li> </ul>

